

# WebDAQ Quick Reference

## Communicate

The WebDAQ Series of intelligent stand-alone loggers are designed for remote monitoring. You communicate with the device over a network connection using the web interface opened in a web browser. Perform this procedure to connect with your WebDAQ Series device. Before proceeding, note the MAC address printed on the label on the underside of the device.

### 1. Connect to a Local Area Network (LAN)

Plug the supplied cable into the Ethernet connector on the rear panel of the WebDAQ Series device, and connect to a local network with DHCP enabled or directly to a PC. DHCP assigns an address when the device is detected. If DHCP is not enabled, a link-local or other assigned address is used for communications.

### 2. Connect the power supply

Connect the adapter cord to the power connector on the rear panel of the WebDAQ Series device, and plug the AC adapter into an electrical outlet. Press the **POWER** button on the rear panel. The POWER LED turns yellow as the hardware starts up. When the LED is green the hardware is ready to use.

### 3. Establish communication with the WebDAQ Series device

Using a PC or device connected to the same network and subnet, open a browser window and enter `http://webdaq-xxxxxx.local` in the address bar, where xxxxxx is the last 6 digits of the MAC address (printed on the label on the underside of the device). The WebDAQ home page opens.

If the WebDAQ web page does not open or an error is returned, install a device discovery tool such as Bonjour Print Services and try again. Bonjour Print Services lets you identify devices installed on your network, and is available as a free download on Windows and other systems.

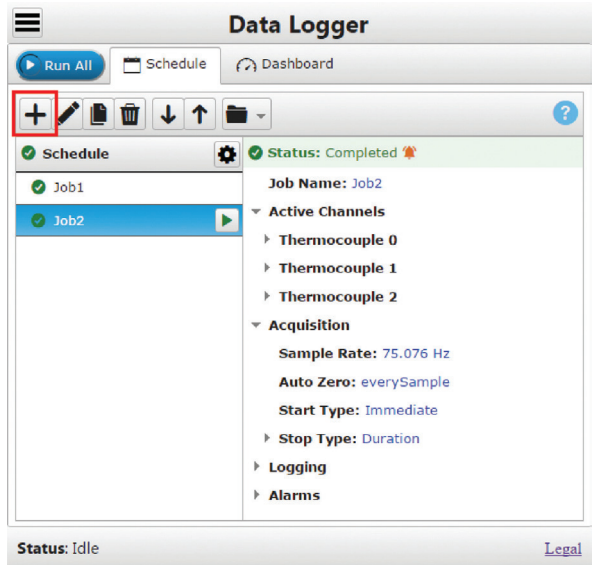
\*Compatible with the latest version of Chrome, Firefox, Safari, UC Browser, Opera, or IE v11 with the latest Windows Updates installed. Not recommended for use with other IE versions or the Edge browser.



# WebDAQ Configure

## Schedule Configuration

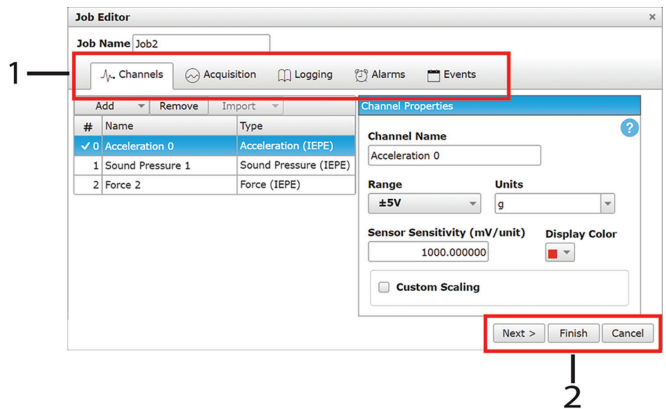
**+** Tap the **New Job** icon to create jobs with the **Job Editor**.



## Job Configuration




Each job is a collection of channels with timing, triggering, and logging properties that represent the measurement or generation to perform.

1. Configure each job with the **Channels**, **Calibration**, **Acquisition**, **Logging**, **Alarms**, and **Events** tabs.
2. Tap **Next** to advance through the tabs, and **Finish** to create the job. All jobs appear in the job list on the Data Logger **Schedule** tab.

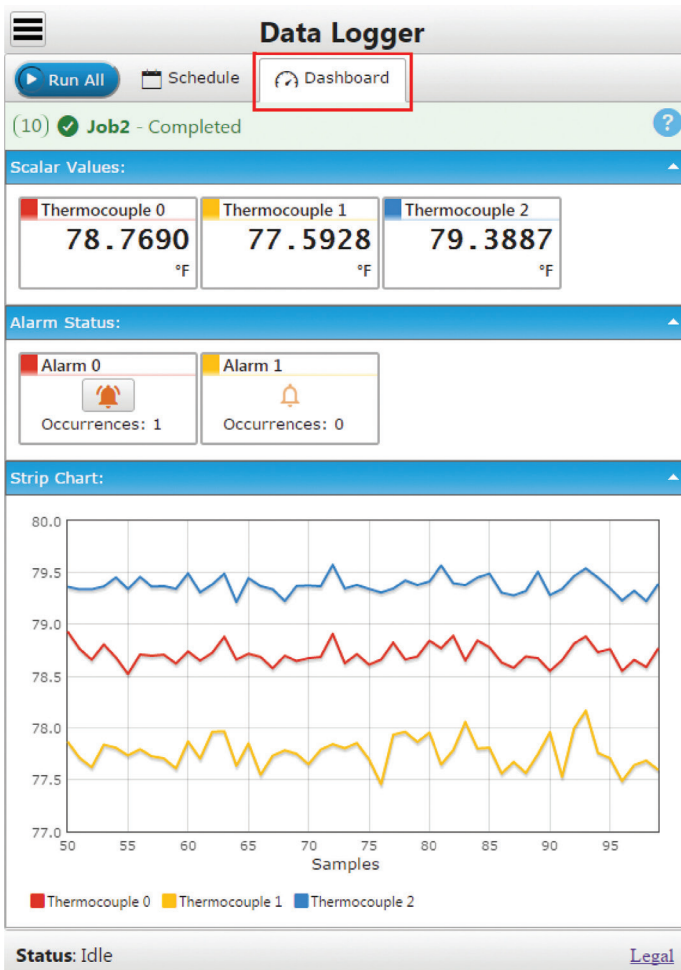


# WebDAQ Log

## Data Dashboard


1. Tap  to run all jobs consecutively, or  from the job list to run one job on demand. Logged data can be saved on the device or to external media.
2. Tap  to view data on the **Dashboard** as it is acquired.


- Minimize scalar and alarm displays
- Hide channels on the strip chart
- View the status of each alarm
- Reset triggered alarms

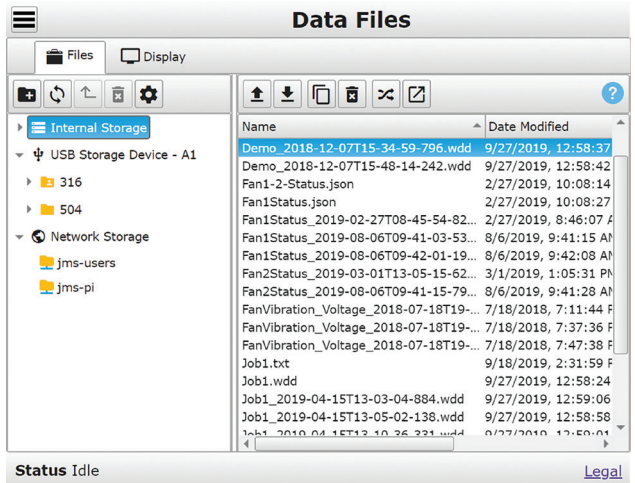


# WebDAQ Manage

## Data File Management


 Manage files and directories on a WebDAQ or mapped network storage location, upload/download, copy/move, share, and convert (csv/uff/bin).


 Display logged data, edit display options, and view acquisition or job details.



Name	Date Modified
Demo_2018-12-07T15-34-59-796.wdd	9/27/2019, 12:58:37
Demo_2018-12-07T15-48-14-242.wdd	9/27/2019, 12:58:42
Fan1-2-Status.json	2/27/2019, 10:08:14
Fan1Status.json	2/27/2019, 10:08:27
Fan1Status_2019-02-27T08-45-54-82...	2/27/2019, 8:46:07 A
Fan1Status_2019-08-06T09-41-03-53...	8/6/2019, 9:41:15 AM
Fan1Status_2019-08-06T09-42-01-19...	8/6/2019, 9:42:08 AM
Fan2Status_2019-03-01T13-05-15-62...	3/1/2019, 1:05:31 PM
Fan2Status_2019-08-06T09-41-15-79...	8/6/2019, 9:41:28 AM
FanVibration_Voltage_2018-07-18T19...	7/18/2018, 7:11:44 F
FanVibration_Voltage_2018-07-18T19...	7/18/2018, 7:37:36 F
FanVibration_Voltage_2018-07-18T19...	7/18/2018, 7:47:38 F
Job1.txt	9/18/2019, 2:31:59 F
Job1.wdd	9/27/2019, 12:58:24
Job1_2019-04-15T13-03-04-884.wdd	9/27/2019, 12:59:06
Job1_2019-04-15T13-05-02-138.wdd	9/27/2019, 12:58:58
Job1_2019-04-15T13-10-26-321.wdd	9/27/2019, 12:59:11


## Device Settings


 View device information.

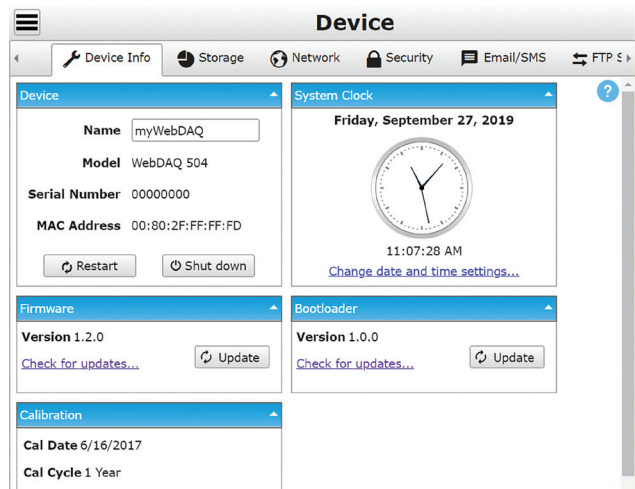
 View the internal and external storage capacity.

 Set network settings.

 Configure security access.

 Configure SMTP servers for email/text notifications.

 Configure the WebDAQ as an FTP server.



Visit our website for information about WebDAQ Series hardware and software.

All product and company names mentioned are trademarks or trade names of their respective companies.